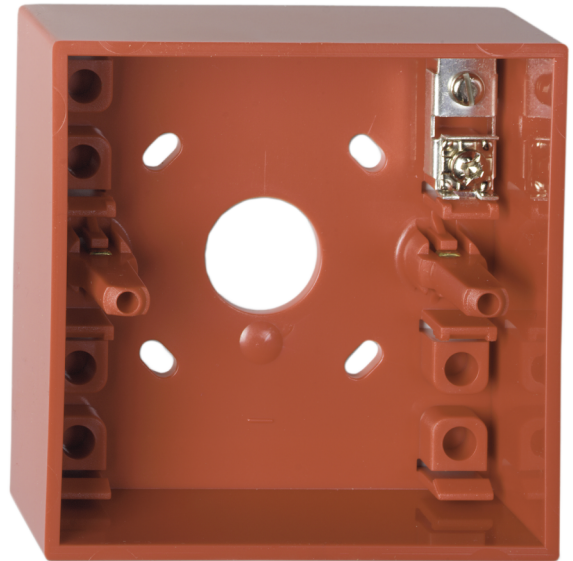


DMN787

Surface mounting box with earth connector, red

General

The DMN787 is a surface mount back-box for the DMN700 series of manual call points. The DMN787 is red and has one terminal.



Details

- Easy to install
- For flush mounting of manual call points
- One terminal

DMN787

Surface mounting box with earth connector, red

Technical specifications

Physical

Colour	Red (RAL 3020)
Mounting type	Surface mount
Material (body)	Noryl SE100 (self-extinguishing)

Environmental

Operating temperature	-40 to +85°C
Relative humidity	90% max. noncondensing
Environment	Indoor

Compatible products

Category	Reference	Description
Detection device	DM700K-N	Manual Call Point, red, 2-position keyswitch, surface mount
Detection device	DMN700R100-KI TR	Conventional MCP, surface mount, red, 100 Ω, free contact, resetable



As a company of innovation, Kidde Global Solutions reserves the right to change product specifications without notice. For the latest product specifications, visit firesecurityproducts.com online or contact your sales representative.